

INDUSTRIAL AND PROCESS FILTER DIVISION





SIMPLEX



DUPLEX



BACKWASHING

Our Company has more than 20 years experience in design, manufacturing and sales of industrial and process filtration.

STANDARD RANGE

Our standard range covers the most common requirements of lubrication, fuel transfer and industrial water treatment, offering short delivery times and cost efficiency for your simplex, duplex and "back wash" applications.

Elements of various construction and micron ratings are available to meet your requirements.

Catalogues available from www.filtrec.com

PRODUCTS ON CUSTOMER REQUEST

Our experienced engineers can support our customers' needs developing bespoke solutions for a number of various filtration applications, such as oil, gas, process and coalescent filtration.

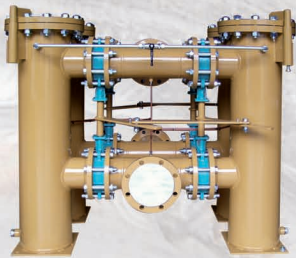
PRODUCTS ON CUSTOMER REQUEST, SOME EXAMPLES



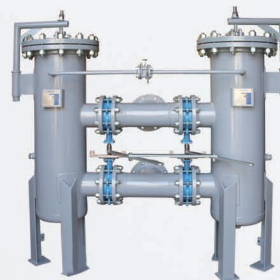
- APPLICATION:
Hot water filtration
- DESIGN CONDITIONS:
10 bar(g) @ 160 °C
- HOUSING MATERIALS:
Carbon steel
- FILTER ELEMENT:
WT1666
(wire mesh 1000 μ m)
- BODY DIAMETER:
711 mm



- APPLICATION:
Sea water filtration
- DESIGN CONDITIONS:
up to 3.5 bar (g)
@ 60°C
- HOUSING MATERIALS
Carbon steel
+Ebonite lin. 5mm
- FILTER ELEMENT:
Basket type
- BODY DIAMETER:
273 mm



- APPLICATION:
Gasoil filtration
- DESIGN CONDITIONS:
16 bar(g)
@ -10/+80 °C
- HOUSING MATERIALS
Carbon steel
- FILTER ELEMENT:
WT1776
(wire mesh 40 μ m)
- BODY DIAMETER:
273 mm



- APPLICATION:
Refinery
- DESIGN CONDITIONS:
8 bar(g) @ 100 °C
- HOUSING MATERIALS
Carbon steel
- FILTER ELEMENT:
RHR1700G20B/5
(20 μ m_c β >1000)
- BODY DIAMETER:
356 mm



- APPLICATION:
Sea water filtration
- DESIGN CONDITIONS:
5,88 bar(g) @ 80 °C
- HOUSING MATERIALS
Carbon steel
+Ebonite lin. 5mm
- FILTER ELEMENT:
WX409
(Slotted tubes 500 μ m)
- BODY DIAMETER:
457 mm



- APPLICATION:
Sea water filtration
- DESIGN CONDITIONS:
6 bar(g) @ 50 °C
- HOUSING MATERIALS
Carbon steel
+Ebonite lin. 5mm
- FILTER ELEMENT:
WX428
(Slotted tubes 3000 μ m)
- BODY DIAMETER:
457 mm

info & contact: www.filtrec.com
info@filtrec.it



CT65-rev.00-06/14

